

# Certificate of Conformity of the Factory Production Control

## GB06/69407.00

In compliance with Regulation 305/2011/EU of the European Parliament and of the Council of 9 March 2011 (the Construction Products Regulation or CPR), this certificate applies to the construction product

Plastomeric Membranes, Elastomeric Membranes and Self-Adhesive Membranes modified bitumen based membranes for the waterproofing of buildings, concrete bridge decks and other trafficked areas of concrete to be used as per the manufacturer's technical specification.

A full listing of products is on page 2

produced by or for

**NOVAGLASS S.p.A.**

Via Gattolè, 1 Salgareda (TV), Italy

and produced in the manufacturing plant

**NOVAGLASS S.p.A.**

Via Gattolè, 1 Salgareda (TV), Italy

This certificate attests that all provisions concerning the assessment and verification of constancy of performance described in Annex ZA of the standard(s)

**EN 13707:2004+A2:2009, EN 13969:2004/A1:2006, EN 14695:2010**

under system 2+ for the performances set out above are applied and that the factory production control fulfils all the prescribed requirements for these performances.

This certificate is valid from 26 February 2015 until 26 February 2018 and will remain valid as long as the test methods and/or factory production control requirements included in the harmonised standard, used to assess the performances of the declared essential characteristics, do not change, and the construction product and the manufacturing conditions in the plant are not modified significantly, unless suspended or withdrawn by the factory production control certification body.

Re certification audit due before 26 February 2018.  
Issue 9. This certificate was first issued on 26 July 2008 under CPD.

There are multiple certificates issued for this scope. The main certificate is numbered GB06/69407.00 and must be used for any legal interpretation

Authorised by

J. Saunders

SYSTEMS & SERVICES CERTIFICATION BUSINESS MANAGER

**SGS United Kingdom Limited, Notified Body 0120**

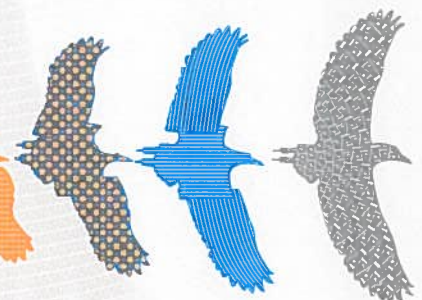
Unit 202B Worle Parkway, Weston-super-Mare, BS22 6WA, United Kingdom

t +44 (0)1934 5229171 +44 (0)1934 522137

e-mail [sgsprodcert@sgs.com](mailto:sgsprodcert@sgs.com) [www.sgs.com](http://www.sgs.com)



0005



**Certificate of Conformity of the Factory Production  
Control**  
GB06/69407.00, continued

Issue 9

EN 13707:2004+A2:2009, EN 13969:2004/A1:2006

PRODUCT NAME	WITHOUT SURFACE PROTECTION	LIGHT SURFACE PROTECTION
APP	APP	APP MINERAL
	APP ECONOMIC	
	APP F	
BETAGUM	BETAGUM	BETAGUM MINERAL
EDILBIT	EDILBIT	EDILBIT MINERAL
	EDILBIT P	EDILBIT P MINERAL
	EDILBIT F	
	EDILBIT P ECO	EDILBIT P ECO MINERAL
	EDILBIT P 180	
EDILFLEX	EDILFLEX	EDILFLEX MINERAL
EDILPOL	EDILPOL	EDILPOL MINERAL
EUROPOL	EUROPOL	EUROPOL MINERAL
EUROSTAR		EUROSTAR
		EUROSTAR S
FLEXOBIT	FLEXOBIT	FLEXOBIT MINERAL
FLEXGUM	FLEXGUM-P	FLEXGUM-P MINERAL
	FLEXGUM-V	FLEXGUM-V MINERAL
		FLEXGUM-P FR MINERAL
		FLEXGUM-P HFR MINERAL
FORMULA 30/P	FORMULA 30/P	
ISOGUM	ISOGUM-P	ISOGUM-P MINERAL
	ISOGUM-V	ISOGUM-V MINERAL
ISOPOL	ISOPOL	ISOPOL MINERAL
	ISOPOL PL	ISOPOL PL MINERAL
	ISOPOL H/T	ISOPOL H/T MINERAL
ISOROOF	ISOROOF	ISOROOF MINERAL
ISOROOF-SBS	ISOROOF-SBS	ISOROOF-SBS MINERAL
	ISOROOF-SBS S-P	ISOROOF-SBS S-P MINERAL
MINERALBIT		MINERALBIT
MINERALFLEX		MINERALFLEX
MULTICOLOR		MULTICOLOR



**Certificate of Conformity of the Factory Production  
Control**  
GB06/69407.00, continued

Issue 9

EN 13707:2004+A2:2009, EN 13969:2004/A1:2006

NOVA-ADHESIVE	NOVA-ADHESIVE 20	NOVA-ADHESIVE 20 MINERAL
	NOVA-ADHESIVE 25	NOVA-ADHESIVE 25 MINERAL
NOVA-APP	NOVA-APP	NOVA-APP MINERAL
	NOVA-APP P	NOVA-APP P MINERAL
NOVABIT	NOVABIT	
NOVAPONTI	NOVAPONTI	NOVAPONTI MINERAL
NOVABOND	NOVABOND	NOVABOND MINERAL
NOVABOND PONTI	NOVABOND PONTI	NOVABOND PONTI MINERAL
NOVAPONTI GA	NOVAPONTI GA	
NOVA	NOVA E-30	NOVA E-30
	NOVA E	
	NOVA BV	
	NOVA FD	
	NOVA HP NOVA HP S	
	NOVA GARDEN	
		NOVA RF
	NOVA RN	
	NOVA SAFE	
NOVAFLEX	NOVAFLEX	
	NOVAFLEX S	
NOVAGLASS	NOVAGLASS	NOVAGLASS MINERAL
	NOVAGLASS S-P	NOVAGLASS S-P MINERAL
NOVAGUM	NOVAGUM-P	NOVAGUM-P MINERAL
NOVA-ISOROOF		NOVA-ISOROOF
	NOVA-ISOROOF PLUS	NOVA-ISOROOF PLUS MINERAL
	NOVA-ISOROOF PLUS S	NOVA-ISOROOF PLUS MINERAL S
	NOVA-ISOROOF PLUS V	
NOVALITE	NOVALITE	
NOVALL-I	NOVALL-I	
	NOVALL-I A	
ISOROOF SBS AL	ISOROOF SBS AL	





**Certificate of Conformity of the Factory Production  
Control  
GB06/69407.00, continued**

**Issue 9**

**EN 13707:2004+A2:2009, EN 13969:2004/A1:2006**

NOVA MECCANO	NOVA MECCANO	
NOVAMINERAL		NOVAMINERAL
		NOVAMINERAL FR
NOVAPOL	NOVAPOL	NOVAPOL MINERAL
	NOVAPOL S	NOVAPOL S MINERAL
	NOVAPOL S-P	NOVAPOL S-P MINERAL
	NOVAPOL P180	NOVAPOL MINERAL P180 MINERAL
NOVAR-CH	NOVAR-CH	NOVAR-CH MINERAL
NOVAR-CH SBS	NOVAR-CH SBS	NOVAR-CH SBS MINERAL
NOVAR-WS FLL	NOVAR-WS FLL	NOVAR-WS FLL
NOVA-SK	NOVA-SK	NOVA-SK MINERAL
	NOVA-SK V	NOVA-SK V MINERAL
	NOVA-SK ALU	
NOVASTAR		NOVASTAR
		NOVASTAR-ISOROOF
NOVATECNO	NOVATECNO	NOVATECNO MINERAL
	NOVATECNO S	NOVATECNO S MINERAL
	NOVATECNO S-P	NOVATECNO S-P MINERAL
NOVATER	NOVATER	NOVATER MINERAL
	NOVATER S-C	NOVATER S-C MINERAL
	NOVATER S-A	
	NOVATER SP	NOVATER SP MINERAL
	NOVATER SP FR	NOVATER SP FR MINERAL
NOVATOP	NOVATOP	NOVATOP MINERAL
POLIBIT	POLIBIT	POLIBIT MINERAL
	POLIBIT ECO	POLIBIT ECO MINERAL
	POLIBIT S	POLIBIT S MINERAL
	POLIBIT S-P	POLIBIT S-P MINERAL
	POLIBIT SP	POLIBIT SP MINERAL
	POLIBIT S/BIARMATO	
ROOF ELITE	ROOF ELITE	
VELOBIT	VELOBIT	



**Certificate of Conformity of the Factory Production  
Control**  
GB06/69407.00, continued

Issue 9

EN14695:2010

PRODUCT NAME	WITHOUT SURFACE PROTECTION	LIGHT SURFACE PROTECTION
NOVABOND PONTI (*)	NOVABOND PONTI	
NOVAPONTI (*)	NOVAPONTI	
	NOVAPONTI GA	
NOVA (*)	NOVA HP	
	NOVA HP S	

